



**InterGroup**  
Mining

**Industry:** MINING  
GOLD

**Location:** North Queensland  
Australia

**Status:** Advanced  
Exploration

**Video:** [www.igmining.com](http://www.igmining.com)



## HIGHLIGHTS

InterGroup Mining Pty Ltd has a major gold exploration project located in North Queensland, Australia, in an underexplored high gold bearing district, west of Charters Towers.

The compelling nature of the project includes the potential for a major discovery, characterised by surface mineralisation, which allows low cost production and accelerated lead times.

The company is currently expanding it's Exploration Permit (EPM) to a full Mining Lease (ML).

- Exploration is currently focused on 2 areas, known as Brilliant Brumby and The Worm.
- 835 surface geochemical samples have been taken, over 18 square kilometers, and include 121 stream sediment samples, 539 Soil samples and 175 Rock Chip Samples.
- Very high gold values were discovered in the samples, including 176 g/t gold, 95.7 g/t gold & 82.2 g/t gold at Brilliant Brumby, as well as several samples above 20 g/t gold, along with excellent results from soil samples.
- Recent drill chip samples have included intercepts with gold values up to 74.9 g/t gold, confirming high grade ore continues at depth.
- Multiple samples contain visible gold.



**DRILL CHIP SAMPLES  
READING 74.9 G/T GOLD**

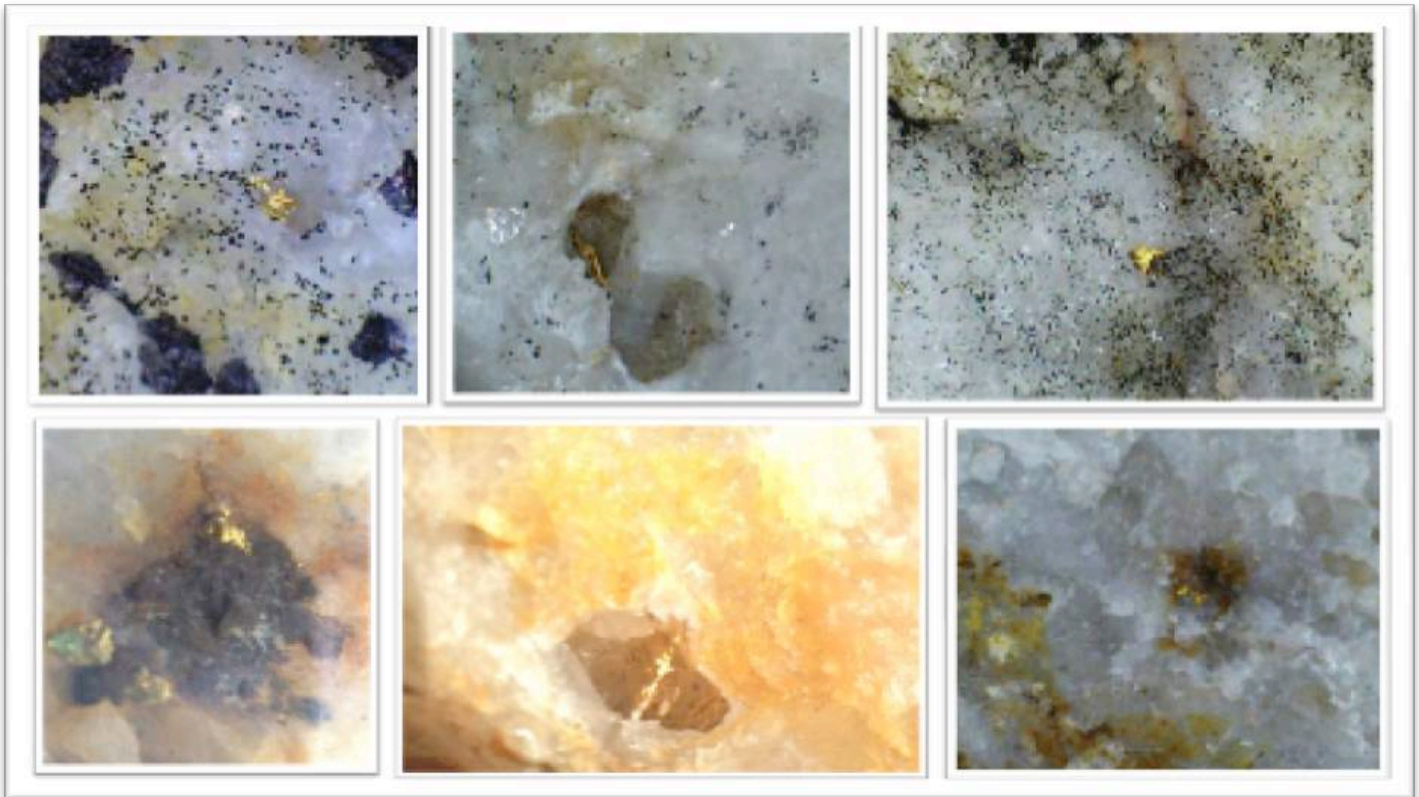


**GOLD NUGGETS FROM  
SEDIMENT SAMPLING  
AT THE WORM**

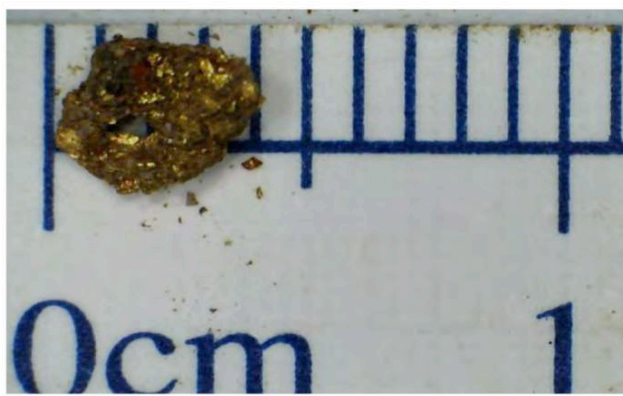
### 5 OPEN PIT MINING TARGETS

- A trend in the mineralisation, of a combined strike length of more than 2 kilometers has been identified at Brilliant Brumby and a potential one kilometer plus strike length at The Worm.
- Ground mag has successfully identified numerous large scale structures and has helped to confirm priority drill hole targets.
  - A focused drilling program of over 4,600 meters has been completed with multiple high grade gold intercepts encountered. Mineralisation is open at depth and along strike.
  - 5 Open Pit Mining targets have been identified at Brilliant Brumby, Silica Ridge & The Worm.

## MULTIPLE SAMPLES CONTAIN VISIBLE GOLD



**GOLD NUGGET FROM BRILLIANT BRUMBY**



### THE GEOLOGISTS ADVISE:

- large-scale geological structures have been identified at Brilliant Brumby and these appear to represent an unusual potential along a 2 kilometer strike length for significant gold mineralization from surface to 120 meters +.

- these structures display magnetite destructive alteration typical of quartz-vein mesothermal "Charters Towers style" gold mineralizing systems that are well known for their high grade and deep structures

- Essentially, there are 2 conclusive targets – the high grade narrow veins and the possibility for an intrusive driven bulk target.

### HISTORICAL FACTS

Brilliant Brumby was discovered & mined between 1937 – 1940, producing 790 oz of gold from 950 tons of ore – which is an average grade of 26 g/t gold.

Charters Towers is Australia's richest major gold field, producing more than 7 million oz of gold with an average grade of 34 g/t gold.

# 5 OPEN PIT MINING TARGETS

4 at Brilliant Brumby Area & 1 at The Worm

